



# Boone Lodge

## Cedarmore Main Campus



Boone Lodge is a main point on the Cedarmore campus; it houses guest rooms, the Crossings Cafe, and the Fireside Room. The beautiful view from the back deck overlooks a forested ravine and offers vivid sunsets.

### LODGING

- Total maximum capacity: 317
  - Basement: 13 Rooms, 86 Beds
  - 1st Floor: 18 Rooms, 114 Beds
  - 2nd Floor: 18 Rooms, 118 Beds
- Maximum capacity per room: up to 8.
- Each room has a private bathroom

### MEETING

- Lower level has 3 partitioned meeting rooms which can be converted into one large space.
- Maximum capacity: 120

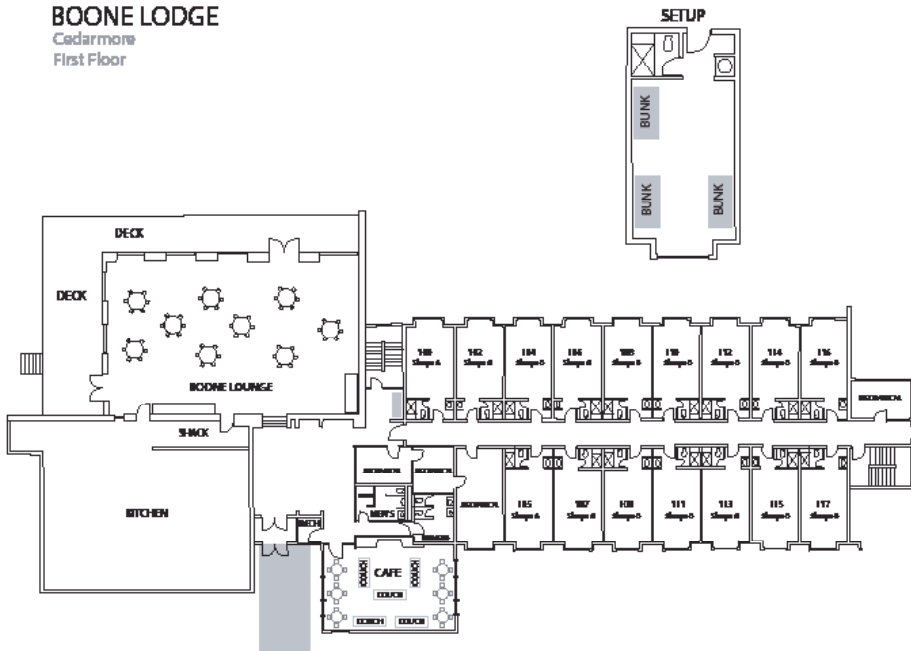


Boone Lobby

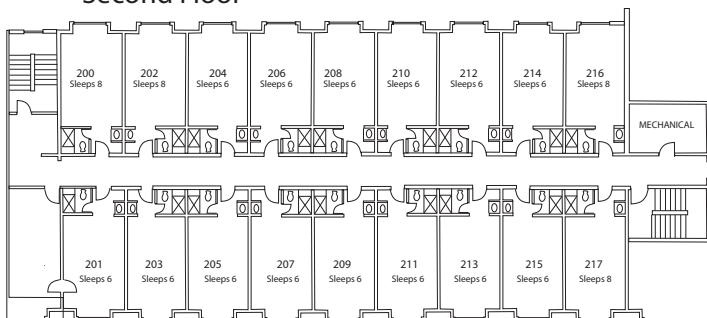


Boone Room

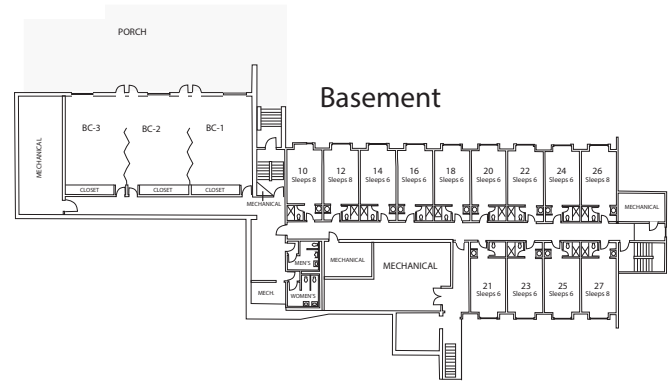
#### BOONE LODGE Cedarmore First Floor



#### Second Floor



#### Basement



# Boone Lodge - Basement

Under construction!!!!!!

Total Capacity 86

9 rooms with 6 beds

4 rooms with 8 beds

BL 26	1	BL 27	1
	2		2
	3		3
	4		4
	5		5
	6		6
	7		7
	8		8
BL 24	1	BL 25	1
	2		2
	3		3
	4		4
	5		5
	6		6
BL 22	1	BL 23	1
	2		2
	3		3
	4		4
	5		5
	6		6
BL 20	1	BL 21	1
	2		2
	3		3
	4		4
	5		5
	6		6
BL 18	1		
	2		
	3		
	4		
	5		
	6		
BL 16	1	Notes:	3 conferences rooms that have room for 50 chairs each
	2		No public restrooms downstairs, have to go to the main floor.
	3		
	4		
	5		
	6	Bathrooms	Bathrooms in each room
BL 14	1		Bathrooms have a shower and toilet behind a door. Sink with small vanity in main room.
	2		
	3		
	4		
	5		
	6		
BL 12	1		
	2		
	3		
	4		
	5		
	6		
	7		
	8		
BL 10	1		
	2		
	3		
	4		
	5		
	6		
	7		
	8		

## Boone Lodge - 1st Floor

6 Rooms with 8 Beds = 48

11 Rooms with 6 Beds = 66

Total Capacity = 114

BL 116	1		BL 117	1
	2			2
	3			3
	4			4
	5			5
	6			6
	7			7
	8			8
BL 114	1		BL 115	1
	2			2
	3			3
	4			4
	5			5
	6			6
BL 112	1		BL 113	1
	2			2
	3			3
	4			4
	5			5
	6			6
BL 110	1		BL 111	1
	2			2
	3			3
	4			4
	5			5
	6			6
BL 108	1		BL 109	1
	2			2
	3			3
	4			4
	5			5
	6			6
BL 106	1		BL 107	1
	2			2
	3			3
	4			4
	5			5
	6			6
BL 104	1		BL 105	1
	2			2
	3			3
	4			4
	5			5
	6			6
	7			7
	8			8
BL 102	1		BL 103	1
	2			2
	3			3
	4			4
	5			5
	6			6
	7			7
	8			8
BL 100	1		Conference Spaces	
	2		Fire side	16 seats with tall chairs and tables
	3			10 seats with couches
	4			Can have a mini fridge
	5			Has a TV with HDMI hookup
	6			
	7		Carin Hall	Projector with HDMI hookup
	8			28 seats with couches
				28 seats with tall chairs and table
				Can have a mini fridge
Bathrooms	Bathrooms in each room		Public bath	Womens have two stalls and two sinks
	Bathrooms have a shower and toilet behind a door. Sink with small vanity in main room.			Mens has one stall and two urinals

## Boone Lodge - 2nd Floor

5 Rooms with 8 Beds = 40

13 Rooms with 6 Beds = 78

Total Capacity = 118

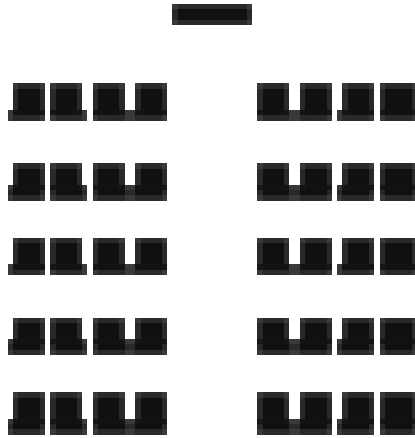
BL 216	1		BL 217	1
	2			2
	3			3
	4			4
	5			5
	6			6
	7			7
	8			8
BL 214		1	BL 215	1
	2			2
	3			3
	4			4
	5			5
	6			6
BL 212	1		BL 213	1
	2			2
	3			3
	4			4
	5			5
	6			6
BL 210	1		BL 211	1
	2			2
	3			3
	4			4
	5			5
	6			6
BL 208	1		BL 209	1
	2			2
	3			3
	4			4
	5			5
	6			6
BL 206	1		BL 207	1
	2			2
	3			3
	4			4
	5			5
	6			6
				7
				8
BL 204	1		BL 205	1
	2			2
	3			3
	4			4
	5			5
	6			6
BL 202	1		BL 203	1
	2			2
	3			3
	4			4
	5			5
	6			6
	7			
	8			
BL 200	1		BL 201	1
	2			2
	3			3
	4			4
	5			5
	6			6
	7			
	8			

Conference Space 1 small conference room that can hold about 25 chairs. Very small and not used often.

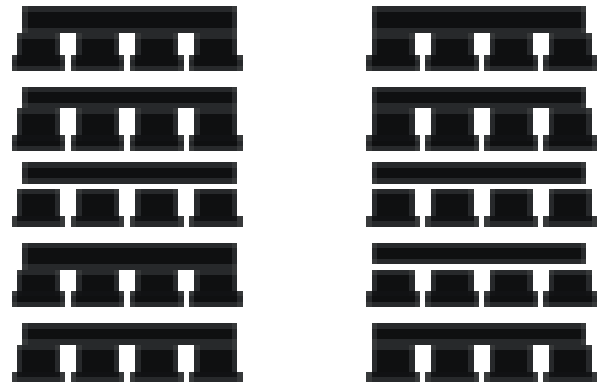
Bathrooms Bathroom in each room  
Bathrooms have a shower and toilet behind a door. Sink with small vanity in main room.

# Please Select a Set Up Option

Lecture with Isle



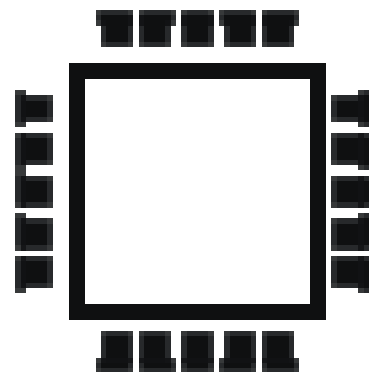
Lecture with Tables



Horseshoe



Boardroom



Horseshoe option is only available for groups of 25 or less.