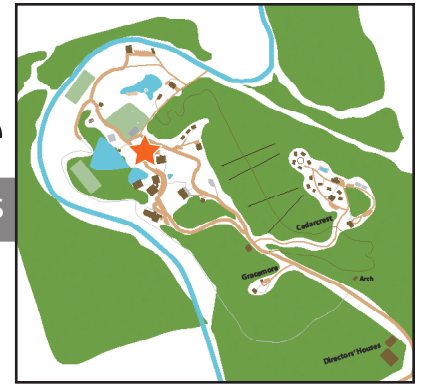




Williams-Wallace Lodge

Cedarmore Main Campus

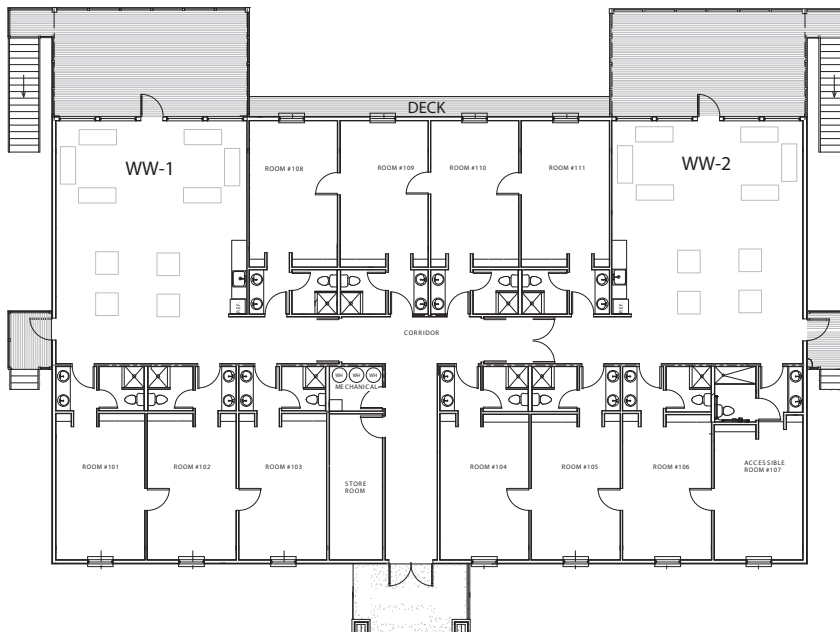


Williams-Wallace Lodge is in the center of the Cedarmore Main Campus. The back deck area is a great place to fellowship and enjoy the natural forest surroundings.

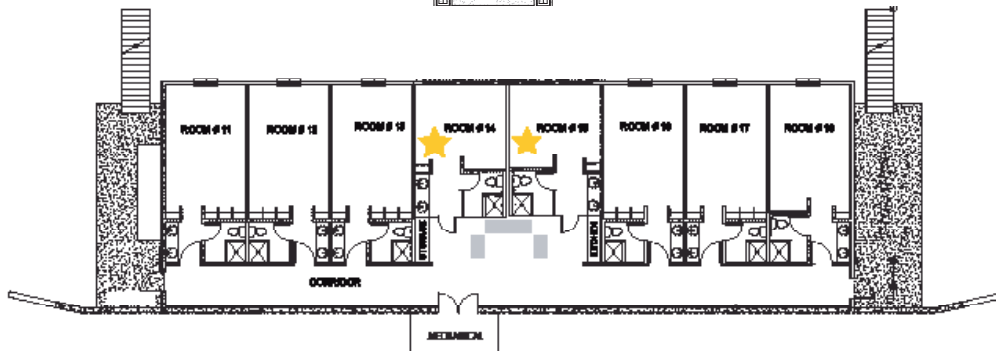
LODGING

- Total number of rooms: 19
- Each room has a private bathroom
- Camp & Retreat Setup:
Total maximum capacity: 148
17 rooms of 8; 2 rooms of 6

Main Level



Lower Level



Exterior View



Lodge Room



Bathroom



Meeting Space



Deck View

MEETING

- 2 common areas on main floor with small kitchenettes (refrigerator, sink, and microwave), couches, tables and chairs
- Small common area and kitchenette on lower level

Williams Wallace - Lower Level					
6 Rooms with 8 Beds = 48					
2 Rooms with 6 Beds = 12					
Total Capacity = 60					
	Room Details	Bathrooms have shower and toilet behind door. Two sinks with a large vanity. Some rooms have connecting doors		WW 11	1
					2
					3
					4
					5
	Common area	7 seats on couches			6
		full fridge			7
		microwave			8
		small counter no sink		WW 12	1
					2
					3
					4
					5
					6
					7
					8
				WW 13	1
					2
					3
					4
					5
					6
					7
					8
				WW 14	1
					2
					3
					4
					5
					6
				WW 15	1
					2
					3
					4
					5
					6
				WW 16	1
					2
					3
					4
					5
					6
					7
					8
				WW 17	1
					2
					3
					4
					5
					6
					7
					8
				WW 18	1
					2
					3
					4
					5
					6
					7
					8

Williams Wallace - 1st Floor

11 Rooms with 8 Beds

Total Capacity = 88

	WW 101	1		
		2		Common
		3		Area A
		4		4 tables with 16 chairs
		5		18 seats on couches
		6		Full fridge
		7		Sink with cabinets
		8 Connecting door		microwave
	WW 102	1		
		2		
		3		
		4		
		5		
		6		
		7		
		8		
	WW 103	1		WW 108
		2		1
		3		2
		4		3
		5		4
		6		5
		7		6
		8 Connecting door		7
				8 Connecting Door
	Room			WW 109
	Details	Bathrooms have shower and toilet behind door. Two sinks with a large vanity.		1
		Some rooms have connecting doors		2
				3
				4
				5
				6
				7
				8
	WW 104	1		WW 110
		2		1
		3		2
		4		3
		5		4
		6		5
		7		6
		8 Connecting door		7
				8 Connecting Door
	WW 105	1		WW 111
		2		1
		3		2
		4		3
		5		4
		6		5
		7		6
		8		7
				8
	WW 106	1		
		2		Common
		3		Area B
		4		4 tables with 16 chairs
		5		14 couch seats
		6		full fridge
		7		sink with cabinets
		8 Connecting Door		microwave
	WW 107	1		
		2		
		3		
		4		
		5		
		6		
		7		
		8		